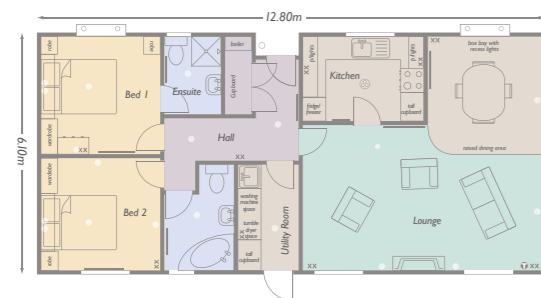


cavendish 42' x 20' (12.80 x 6.10m) - 2 bedroom

One of our most popular Park Homes, the Cavendish features a luxury finish and clever use of space. Additional features include; a raised split level dining area and lounge, separate kitchen and utility area, large box bay windows and dormer roof over recessed porch



Lounge	6.01 x 3.67m	19'8 x 12'0
Dining Area	2.86 x 2.95m	9'4 x 9'8
Kitchen	3.05 x 2.11m	10' x 6'11
Bedroom 1	2.98 x 2.97m	9'9 x 9'8
Ensuite	1.47 x 1.95m	4'10 x 6'4
Bedroom 2	2.93 x 2.84m	9'7 x 9'3
Bathroom	1.83 x 2.67m	6'0 x 8'9
Utility	1.52 x 2.67m	5'0 x 8'9

For key see page 43