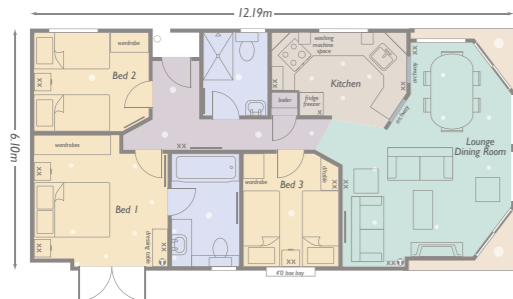


eclipse

45' x 20' (12.19 x 6.10m) - 3 bedroom

This stunning modern home was launched in 2000 to celebrate entering the new Millennium. Its features include; unique glass frontage with feature roof detail, split level kitchen/dining room, high quality contemporary soft furnishings, fully fitted bathrooms with modern fixtures and fitted bedrooms with stylish co-ordinating features



Lounge	5.32 x 3.48m	17'5 x 11'5
Dining	2.19 x 2.43m	7'2 x 8'0
Kitchen	3.22 x 2.71m	10'7 x 8'1
Bedroom 1	3.35 x 2.94m	11' x 9'8
Bedroom 2	3.25 x 2.84m	10'8 x 9'4
Bathroom	1.86 x 2.83m	6'1 x 9'3
Ensuite	2.10 x 1.72m	6'11 x 5'8
Study	1.52 x 2.07m	5'0 x 6'9
Utility	2.07 x 1.29m	6'9 x 4'3

Key see page 43