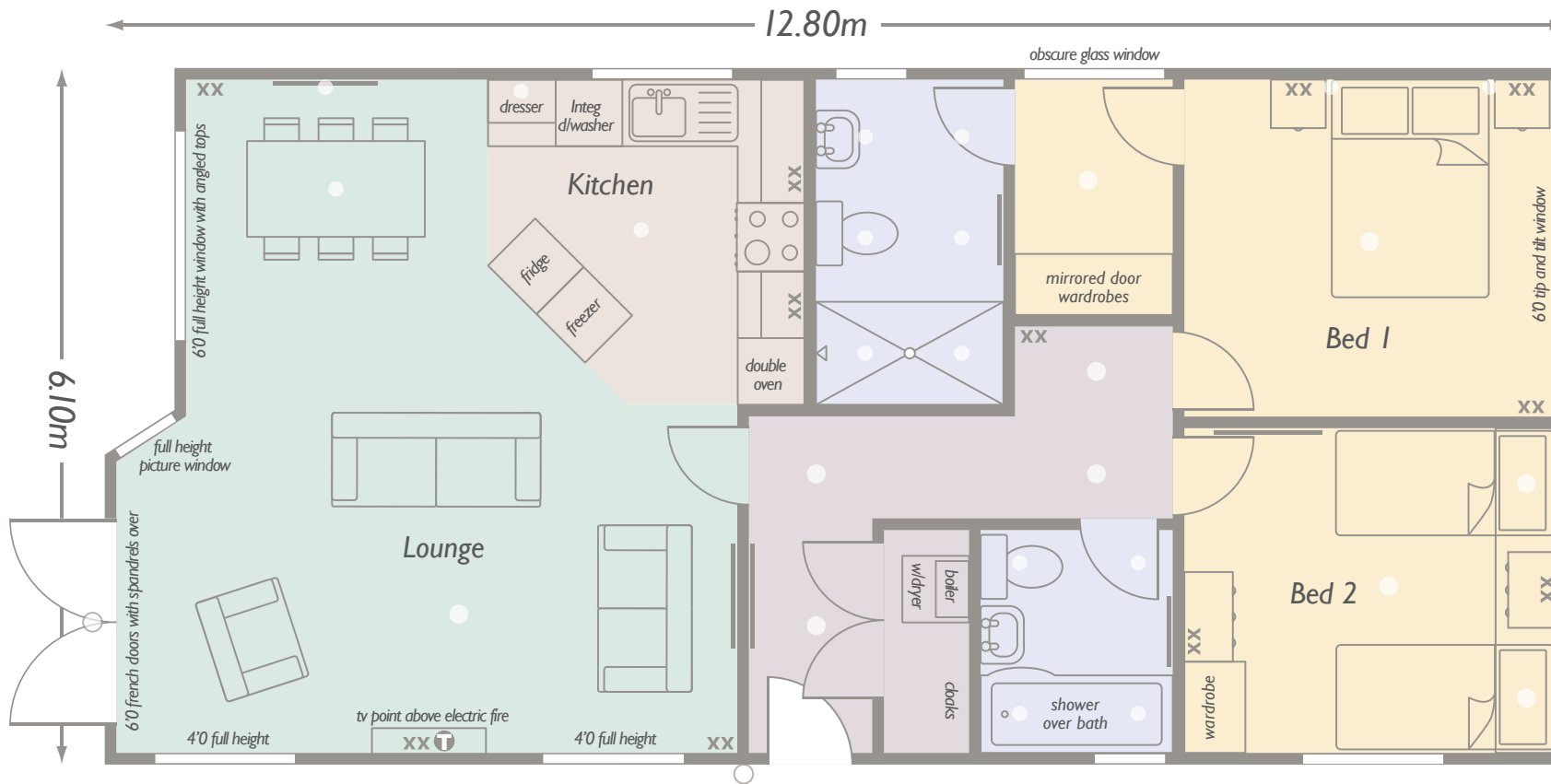


Heritage Impression

42'40" x 20' (12.80 x 6.10m) - 2 bedroom



Lounge	2.94 x 5.34m	9'8" x 17'6½"
Kitchen	2.85 x 2.90m	9'4" x 9'6"
Dining	2.94 x 4.09m	9'8" x 13'5"
Bedroom 1	2.85 x 3.04m	9'4" x 10'0"
Bedroom 2	2.94 x 2.52m	2'9"8" x 8'3½"
Ensuite	1.25 x 1.75m	4'1" x 5'9½"
Bathroom	1.86 x 1.68m	6'1¼" x 5'6"

— Radiators * External tap xx Double sockets x Single sockets ○ Light fittings ◦ Recess lights ⊗ 3 way spotlight p/lights Pelmet lights



Heritage Homes (Wales) Ltd, Unit D,
Penamser Business Park,
Porthmadog, Gwynedd LL49 9GB
Telephone: 01766 515 072
Email: sales@heritagehomes.co.uk
www.heritagehomes.co.uk