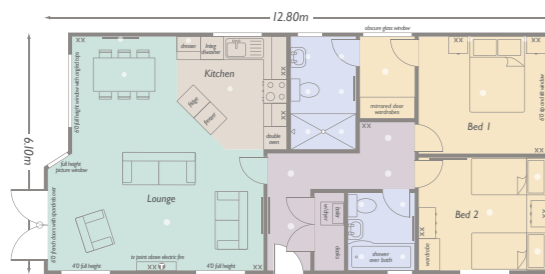


impression 42'40" x 20' (12.80 x 6.10m)

A lodge that captures light through its windows and has an open plan living aspect. Its features include; feature frontage with full height windows and spandrel windows, open plan kitchen with island, fully fitted fireplace with electric fire, separate hallway with cloakroom cupboard, walk through dressing area and triple size shower in ensuite



Lounge	2.94 x 5.59m	9'8" x 17'11 1/2"
Kitchen/Dining	2.94 x 4.98m	9'8" x 15'11 1/2"
Bedroom 1	2.94 x 3.23m	9'8" x 10'7"
Bedroom 2	2.84 x 3.23m	9'4" x 10'7"
Ensuite	2.85 x 1.60m	9'4" x 5'3"
Bathroom	1.96 x 1.68m	6'5" x 5'6"
Walk-in	2.05 x 1.50m	6'9" x 4'6 1/2"

For three bedroom option see page 42
For key see page 43