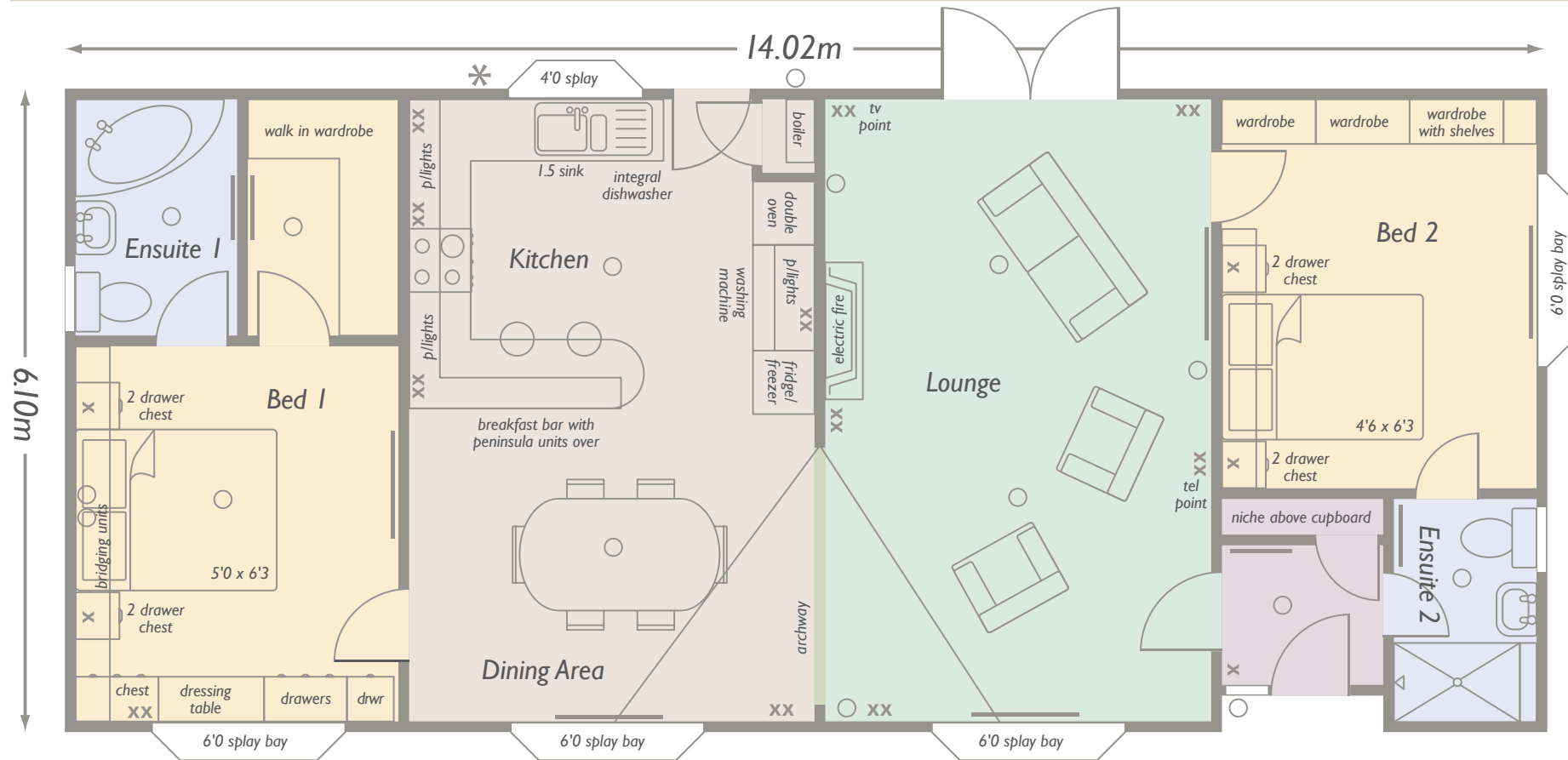


Heritage Regent

14.02m x 6.10m (46' x 20') - 2 bedroom



Lounge	3.58m x 5.89m (11'9 x 19'3)
Dining Area	3.84m x 2.95m (12'7 x 9'8)
Kitchen	3.84m x 2.94m (12'7 x 9'7)
Bedroom 1	3.05m x 3.56m (10' x 11'8)
Ensuite 1	1.52m x 2.22m (5' x 7'3)
Bedroom 2	2.97m x 3.67m (9'9 x 12')
Ensuite 2	1.35m x 2.12m (4'5 x 6'11)

— Radiators * External tap xx Double sockets x Single sockets o Light fittings o Recess lights @ 3 way spotlight p/lights Pelmet lights



HERITAGE

Heritage Homes (Wales) Ltd, Unit D,
Penamser Business Park,
Porthmadog, Gwynedd LL49 9GB
Telephone: 01766 515 072
Email: sales@heritagehomes.co.uk
www.heritagehomes.co.uk