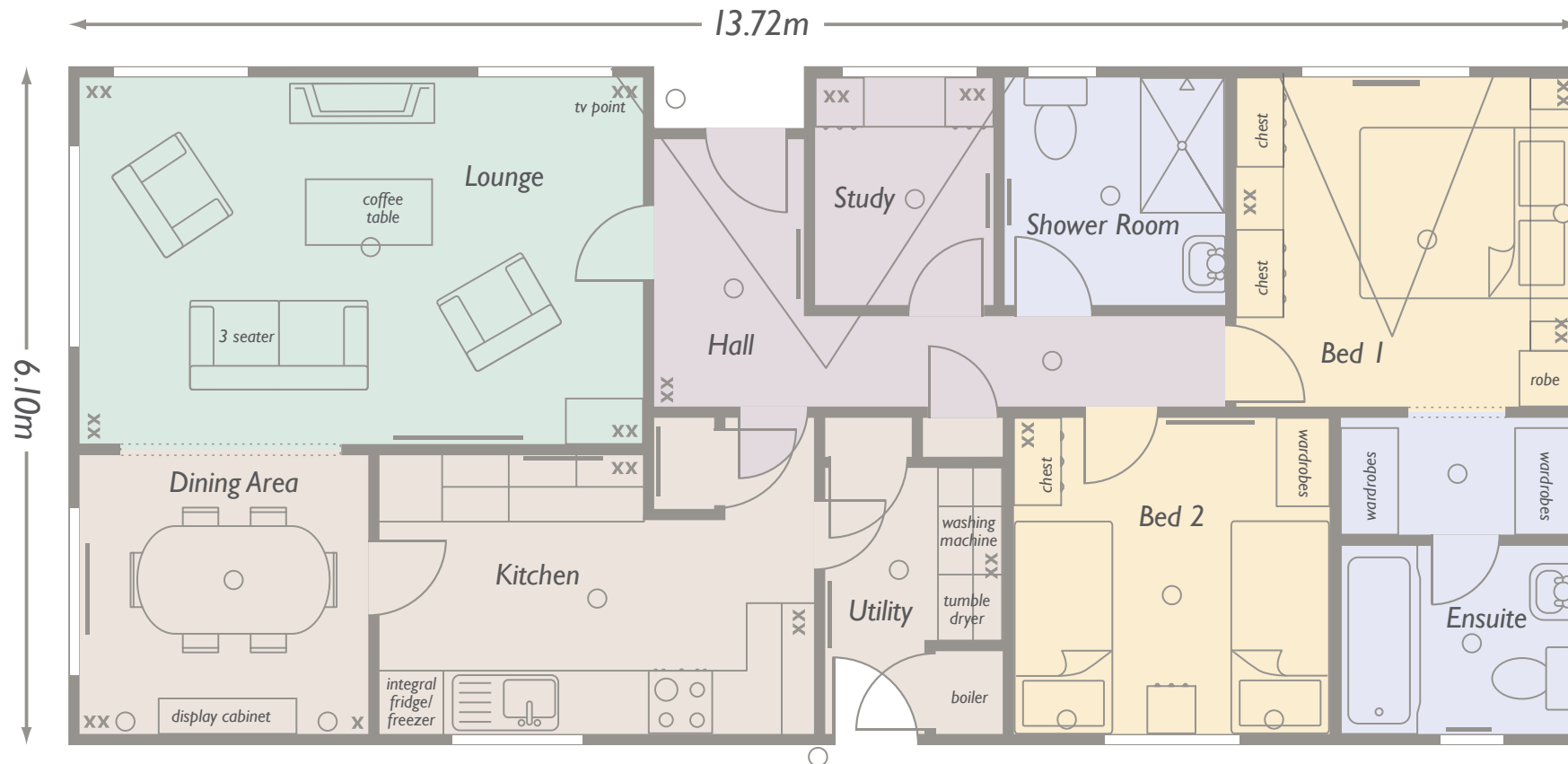


Heritage New Riverside

13.72m x 6.10m (45' x 20') - 2 bedroom 2 bathroom



Lounge	5.08m x 3.28m (16'8 x 10'9)
Kitchen	3.96m x 2.5m (13'0 x 8'2)
Dining Area	2.56m x 2.5m (8'5 x 8'2)
Utility	1.6m x 2.5m (5'3 x 7'9)
Study	1.61m x 2.03m (5'3 x 6'8)
Shower Room	1.99m x 2.03m (6'6 x 6'8)
Bedroom 1	3.04m x 2.94m (10'0 x 9'8)
Bedroom 2	2.85m x 2.84m (9'4 x 9'4)
Ensuite	2.12m x 1.68m (6'11 x 5'6)

— Radiators * External tap xx Double sockets x Single sockets ○ Light fittings ◦ Recess lights ⊗ 3 way spotlight p/lights Pelmet lights



Heritage Homes (Wales) Ltd, Unit D,
Penamser Business Park,
Porthmadog, Gwynedd LL49 9GB
Telephone: 01766 515 072
Email: sales@heritagehomes.co.uk
www.heritagehomes.co.uk