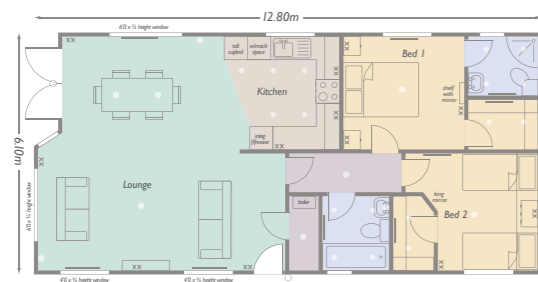


# vision 42'40" x 20' (12.80 x 6.10m)

Designed as a classic buy to let lodge, this stunning home is both contemporary and spacious and available in 2 and 3 bedroom versions. Its features include; French doors and ¾ height picture windows, open plan kitchen with gloss worktops and matching splashbacks, walk-in wardrobes to both bedrooms, bathrooms with contemporary washstands & fittings



Lounge	2.94 x 5.34m	9'8" x 17'6½"
Kitchen	2.85 x 2.90m	9'4" x 9'6"
Dining	2.94 x 4.09m	9'8" x 13'5"
Bedroom 1	2.85 x 3.04m	9'4" x 10'0"
Bedroom 2	2.94 x 2.52m	2'9'8" x 8'3½"
Ensuite	1.25 x 1.75m	4'1" x 5'9½"
Bathroom	1.86 x 1.68m	6'1¼" x 5'6"

For three bedroom option see page 42  
For key see page 43